



Middle East Geospatial Forum
Geosmart Government

Mena3D GmbH

Westendstrasse 16-22 | 60325 Frankfurt Am Main | Germany

Introducing Mena 3D

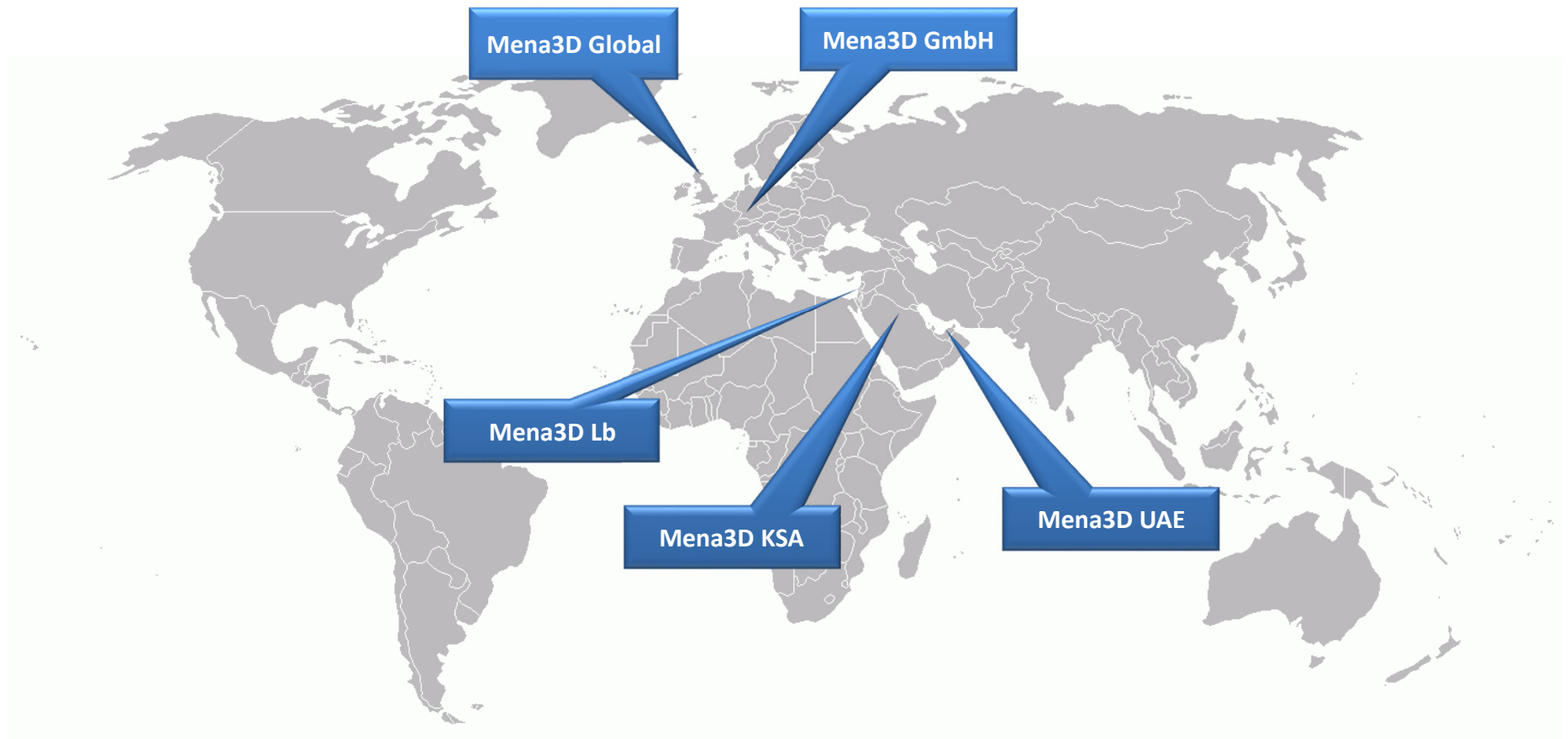
- ➡ Exclusive partner of Nikon Metrology for Middle East and North Africa
- ➡ European based company with headquarter in Frankfurt Germany and several offices in Middle East and North Africa
- ➡ As leading 3D Solutions company we focus on bringing the latest 3D measurement knowledge and technology from Europe especially to the Middle East and North Africa.
- ➡ We offer our customers the right solution which can fit their application and help them to use it in an easy and simple way

Our motto

Best quality for the best price including on time delivery and after sales support

Our Vision

Customer satisfaction



Metrology



Mena 3D

Geospatial



Few local references



DRESSER-RAND





Coming Soon



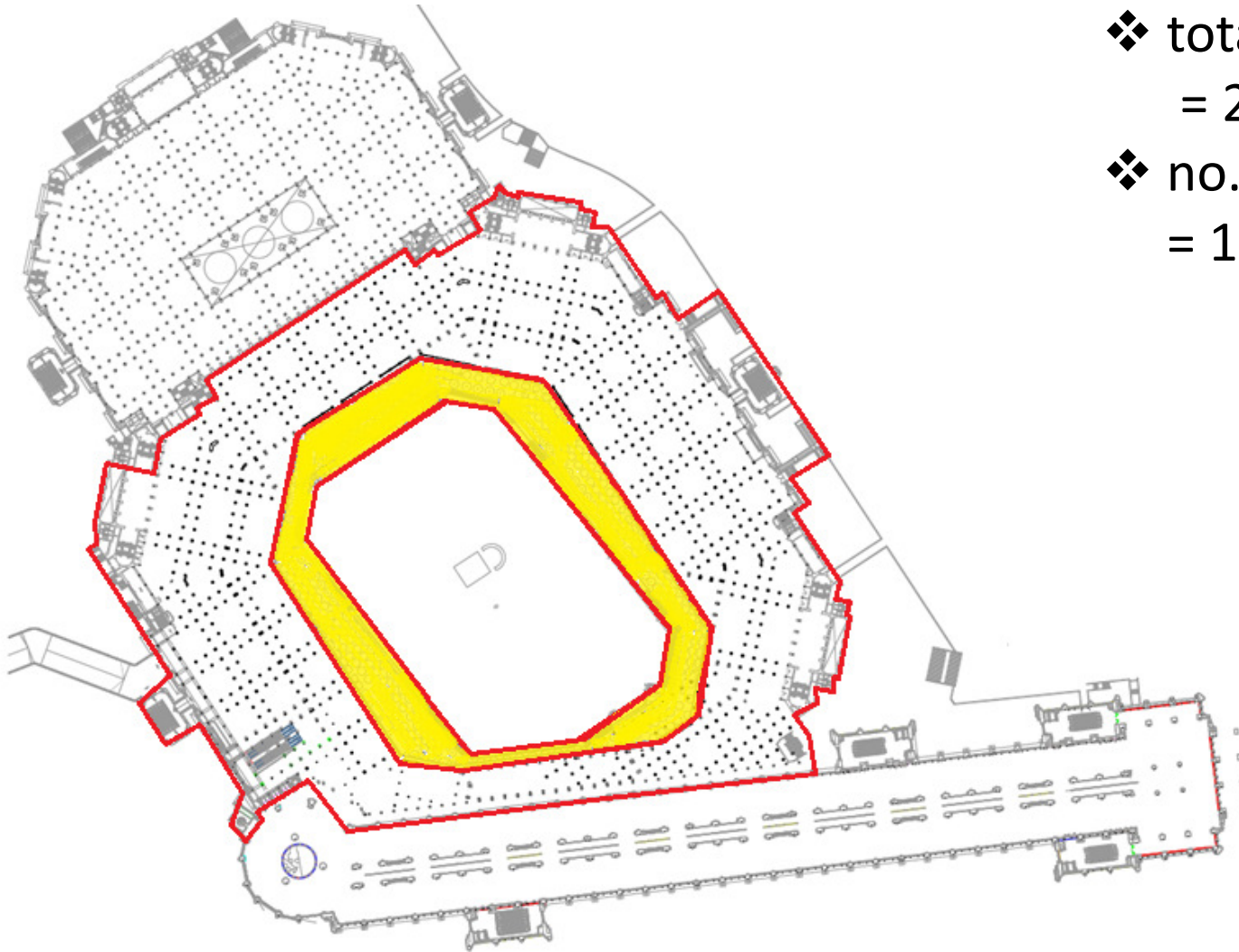
Fully autonomous UAV Aircraft for 3D scanning and surveying

GPS guided waypoints / Go to point / Loiter
accuracy up to 1cm / pixel
Endurance : 30min / 1.5 Hours
Speed 50-140kmh
Windspeed: up to 50 km/h
Payload: 300gr->2kg+
Platform extensible from 150cm -> 300cm for very high payloads and long flight times
Offline waypoint programming
Free Software / Open source
Ready for future applications / automatism
No pilot skills needed

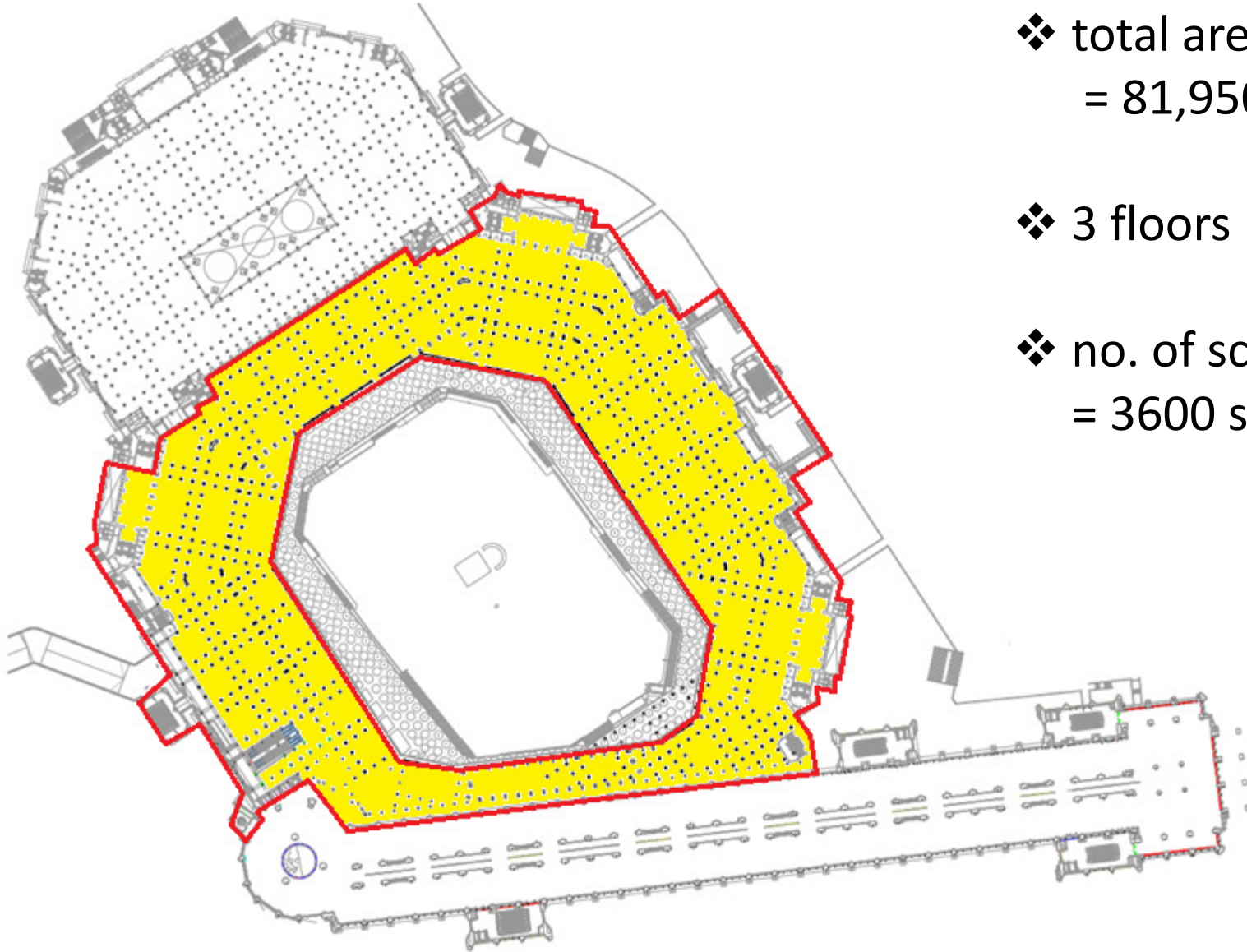


Phase one

- ❖ total area
= 20,500 sqm
- ❖ no. of scans
= 1100 scans



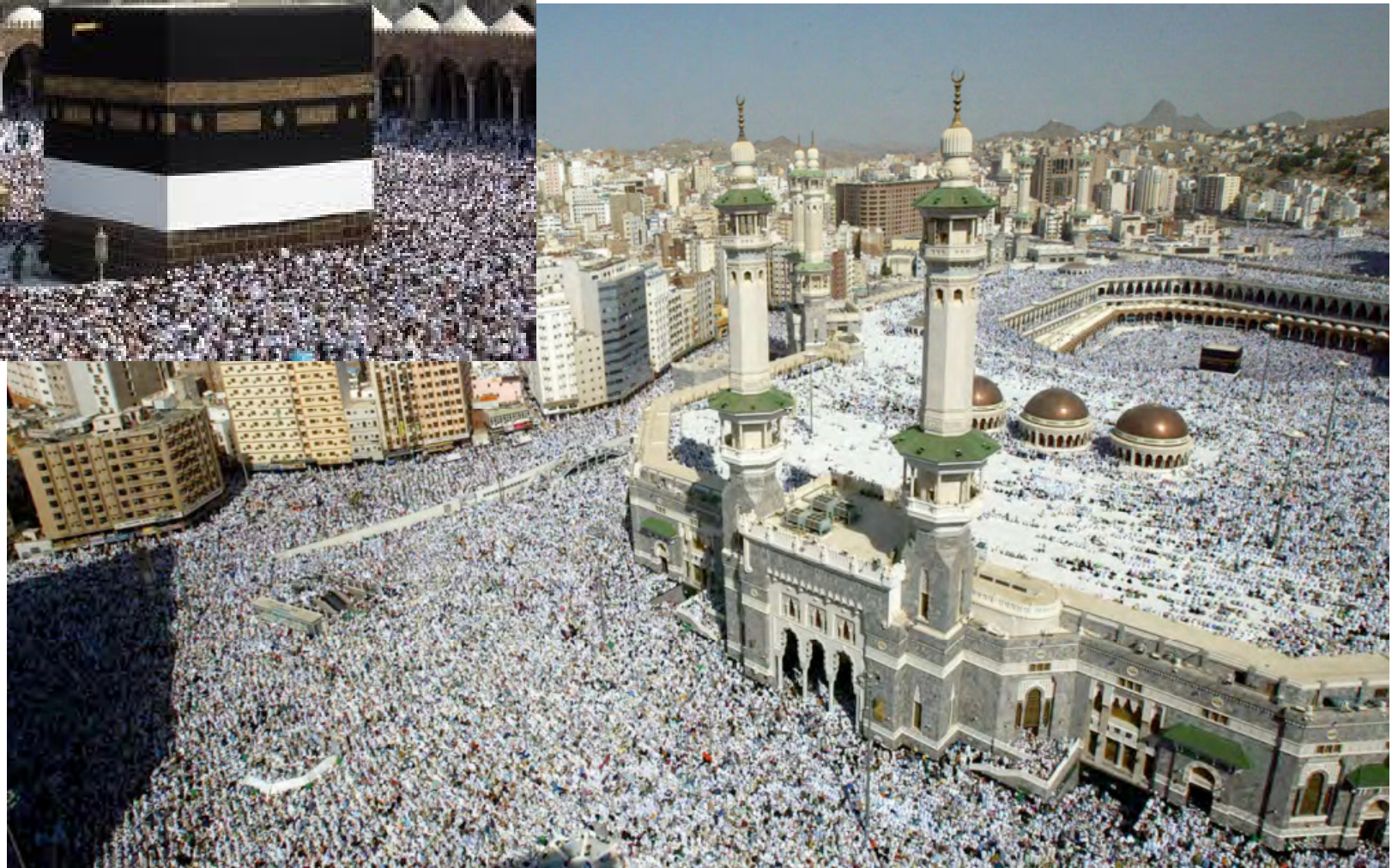
Phase two



❖ total area
= 81,950 sqm

❖ 3 floors

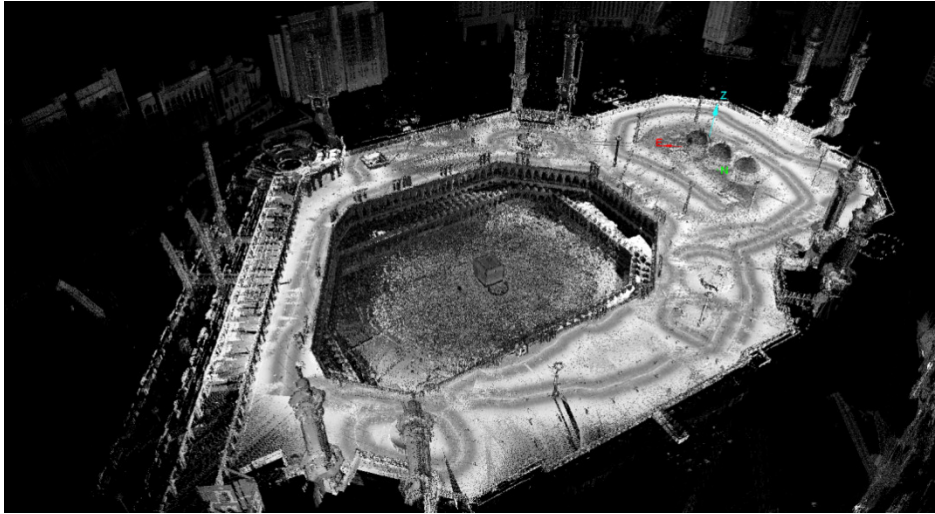
❖ no. of scans
= 3600 scans



Scope of work

- ❖ 30 days for scanning the old historical part
 - ❖ 150 days for scanning the old Saudi part
 - ❖ working hours 6:00 am to 6:00 pm only
 - ❖ high season time (too crowded)
 - ❖ Only one time scanning possibility (decision for 80% overlapping)
 - ❖ 3mm resolution with about 25minutes
- ❖ 2 survey team to fix reference network
 - ❖ 5 scanning teams with faro focus 3d
 - ❖ 1 scanning team with MDL S250 mobile scanner
 - ❖ 1 team to take close-up photos
 - ❖ 25 persons to control crowds
 - ❖ 2 technicians to control electrical equipment
 - ❖ 4 teams to wash & clean dusts

Full scan data



- Handling unlimited point cloud it is possible? Yes
- Selecting the right tools is much depend in the application
- Cluster sill very necessary
- For visualization Geoverse can visualize unlimited point could data
- Data filtering still important but not necessary



Exclusive partner for middle East and North Africa

Thank you



Dr. Khaled El Nabbout | General Manager

Mena3D GmbH |

Westendstrasse 16-22 | 60325 Frankfurt Am Main | Germany

Phone :+49 (0) 69 770752708 | Fax :+49 (0) 69 770752699

Mobile :+49 157 77331616 | Skype : Khaled.nabbout

e-mail : k.nabbout@mena3d.com | www.mena3d.com